



PROJECT OVERVIEW

The Matanuska-Susitna Borough proposes to construct a new roadway to connect the existing portions of Engstrom Road between East Wolf Creek Road and East Aspen Ridge Road. The project will also improve existing portions of Engstrom Road between East Wolf Creek Road and East Tex-Al Drive, and between East Aspen Ridge Road and East Beechcraft Road.

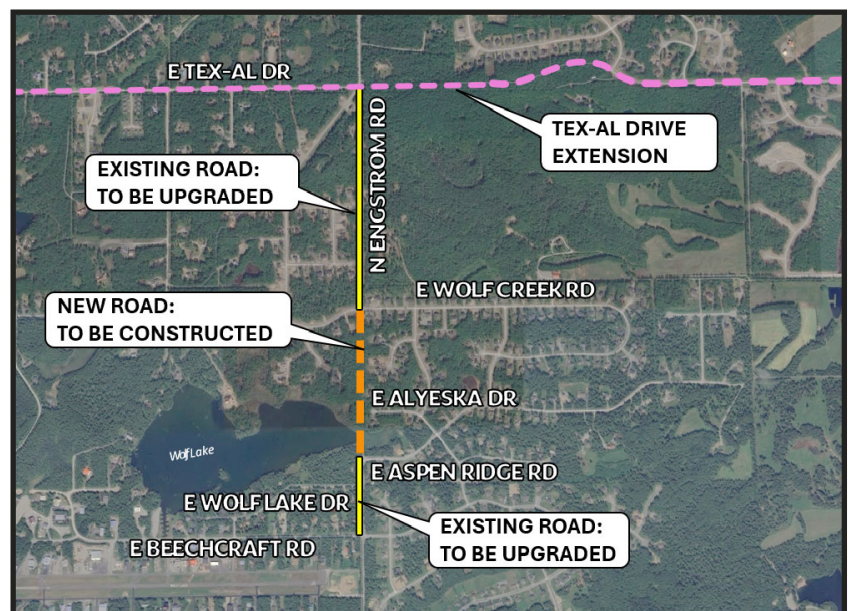
BENEFITS

The new connection will reduce congestion on nearby roadways, improve safety and connectivity, and provide enhanced access to Palmer-Fishhook Road and Wasilla-Fishhook Road for residents in the area.

PROPOSED WORK MAY INCLUDE

- Construction of a new roadway to connect Engstrom Road
- Pavement replacement for portions of Engstrom Road
- Drainage improvements, including culvert replacement
- Minor roadway realignments

PROJECT MAP



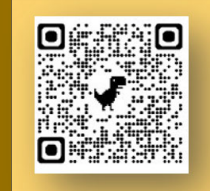
QUESTIONS?

ANDREW STRAHLER, PE
Civil Construction Project Manager
Matanuska-Susitna Borough
Public Works Department
907.861.7710

KELSEY MEANS, IAP2
Public Involvement Coordinator
HDL Engineering Consultants, LLC
(907) 564-2124
KMeans@HDLalaska.com

HEATHER CAMPFIELD, IAP2
Public Involvement Coordinator
HDL Engineering Consultants, LLC
(907) 761-1205
HCampfield@HDLalaska.com

Leave a comment!



MORE INFO
engstromnorth2texal.com

PROPOSED PROJECT SCHEDULE

