



Merrill Field 2025 Airport Improvements

Housekeeping & Ground Rules



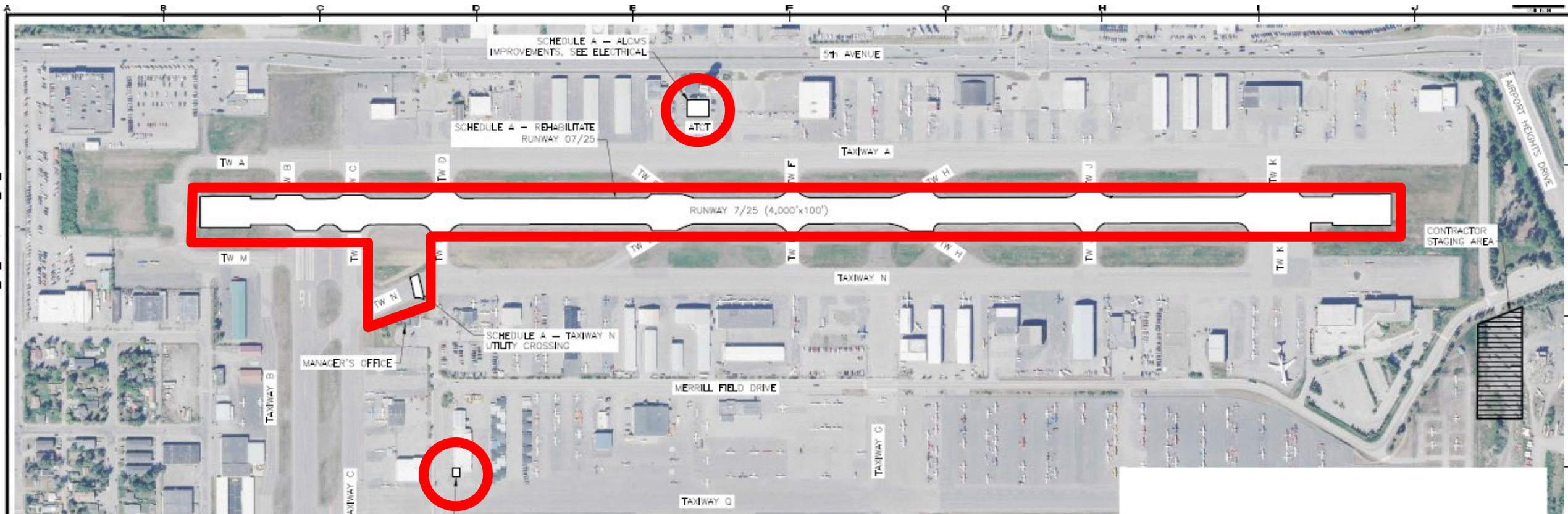
Projects

- **Rotating beacon**
- **Airfield Lighting Controls**
- **Rehabilitate Runway 7/25**
- **Runway 7/25 lighting: edge, PAPI, REIL**

- **Complete duration: ~60 days starting 6/9**



Project overview graphic



Rotating beacon

- **Timeline:** any time during project.
- **Objective:** Replace rotating beacon located at airfield maintenance facility.
- **Impact:** Beacon out of service during work, work near the wash rack.



Airfield Lighting Controls

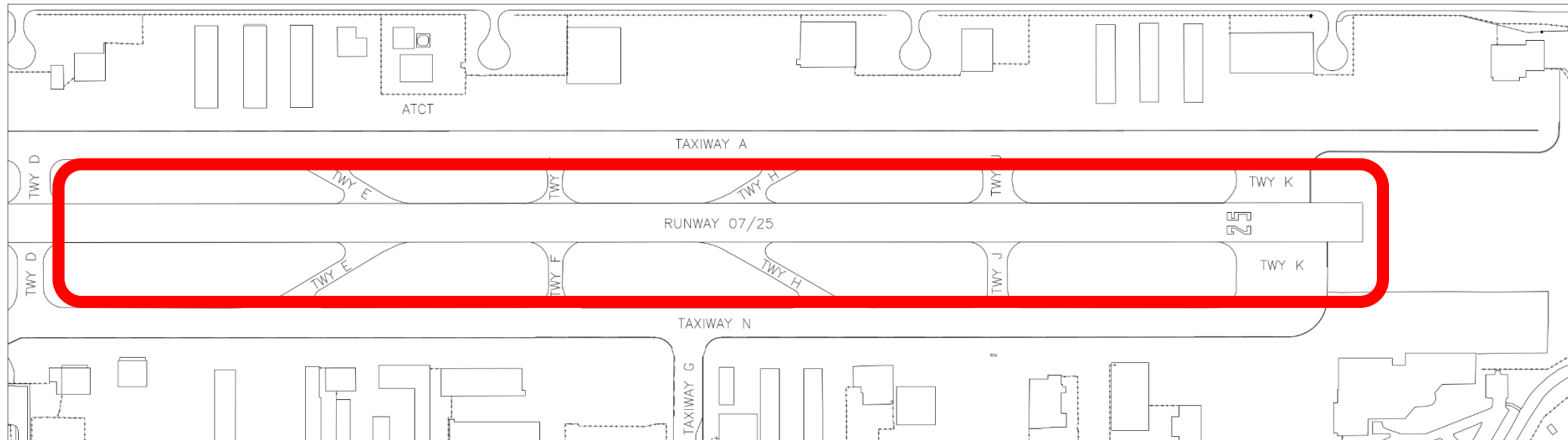
- **Timeline:** two weeks during project.
- **Objectives:** Replace control panel in tower, Upgrade control equipment in airport electrical vault.
- **Impact:** Airfield lighting out of service. Lights can be manually activated with advance notice.



Rehabilitate Runway 7/25

- **Timeline:** 60 days from start of project.
- **Objectives:** Remove and replace top 3-4” of asphalt, all new electrical cabling, edge lighting, and signs, new PAPI and REILs.
- **Impact:** Runway 7/25, portions of taxiways Alpha and November closed, periodic night closure of runway 16/34.

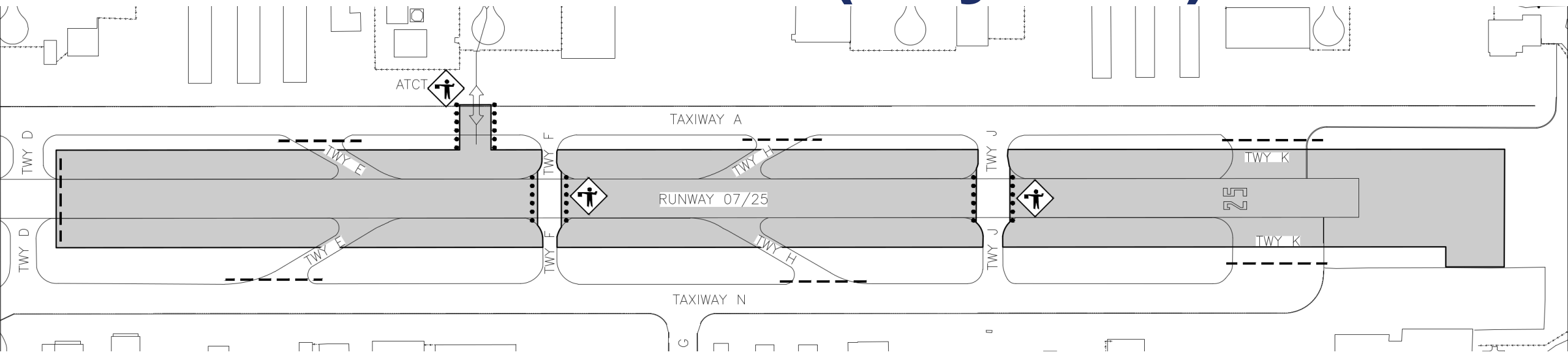
Phase 1A



- **Runway 25 east of taxiway Delta**
- **Starting 6/9. 24/7, not to exceed 60 days**



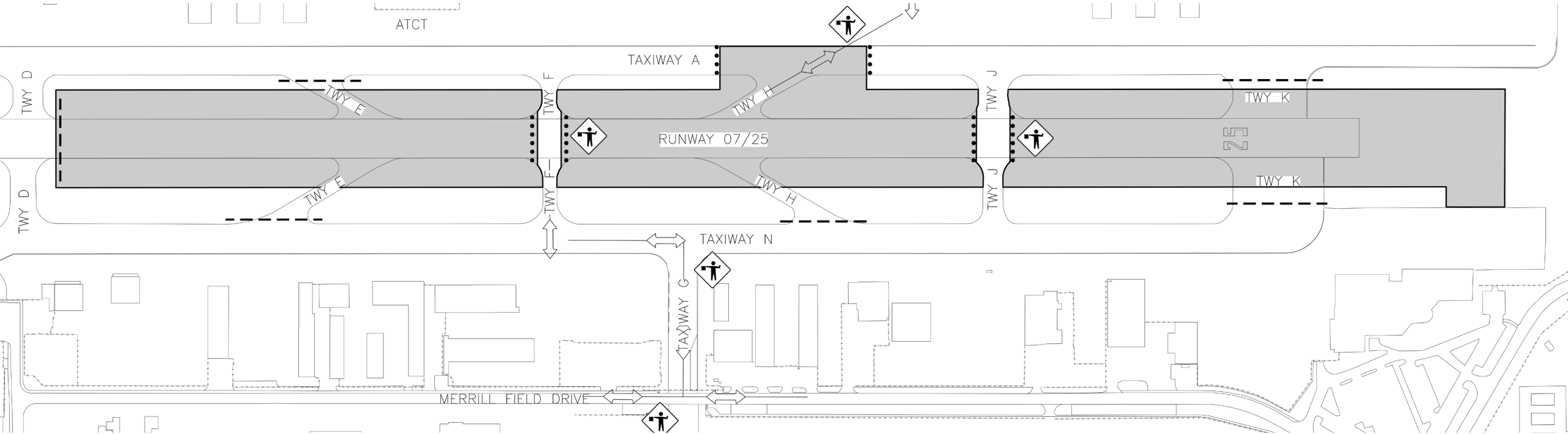
Phase 1A – detail (daytime)



- **Work will move from east to west**
- **Haul road closure on taxiway Alpha**
- **Two taxiways open for crossing**



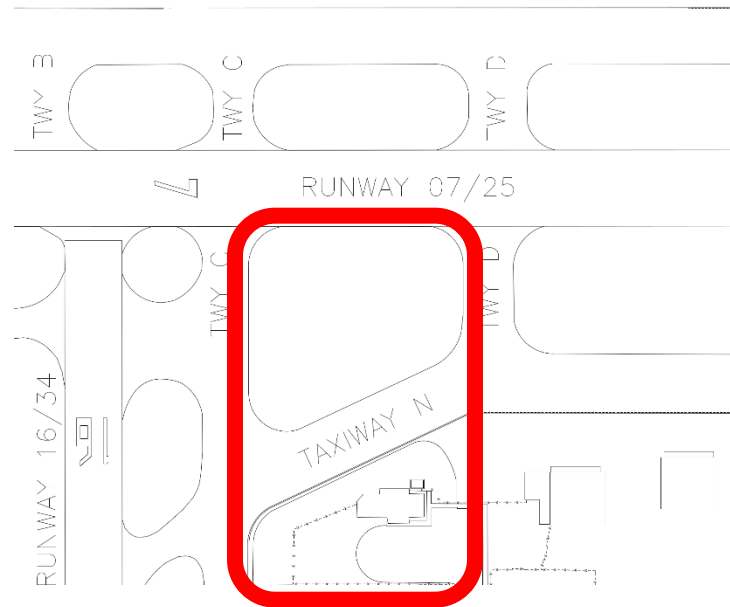
Phase 1A – detail (night)



- **Haul road closure on taxiway Alpha**
- **One taxiway open for crossing**

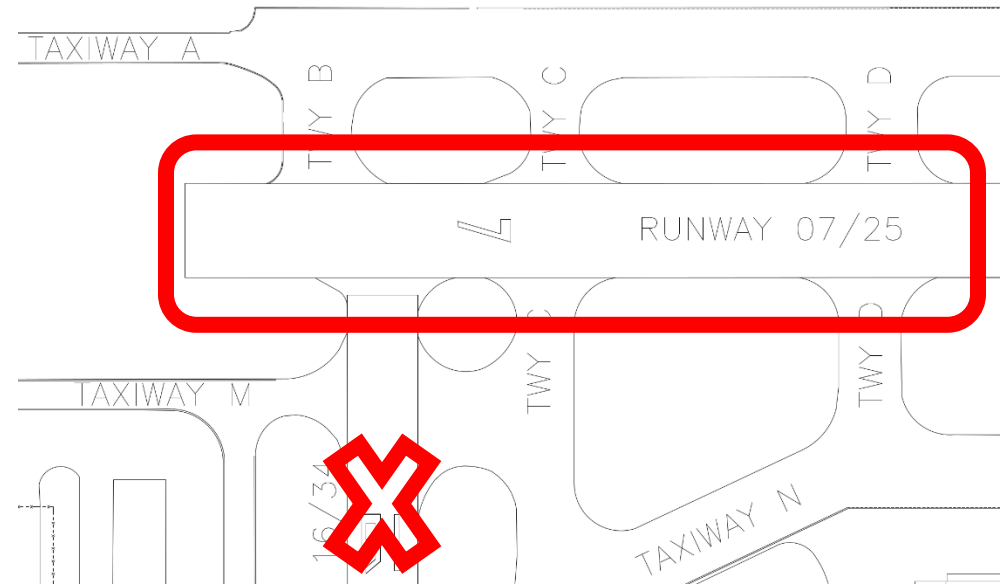


Phase 1C



- **Grass island and taxiway November between taxiways Charlie and Delta**
- **During phase 1A, not to exceed 7 days**

Phase 1B



- **Runway 25 taxiway Delta and west**
- **Between 10pm and 7am, not to exceed 21 nights. Runway 16 closed.**

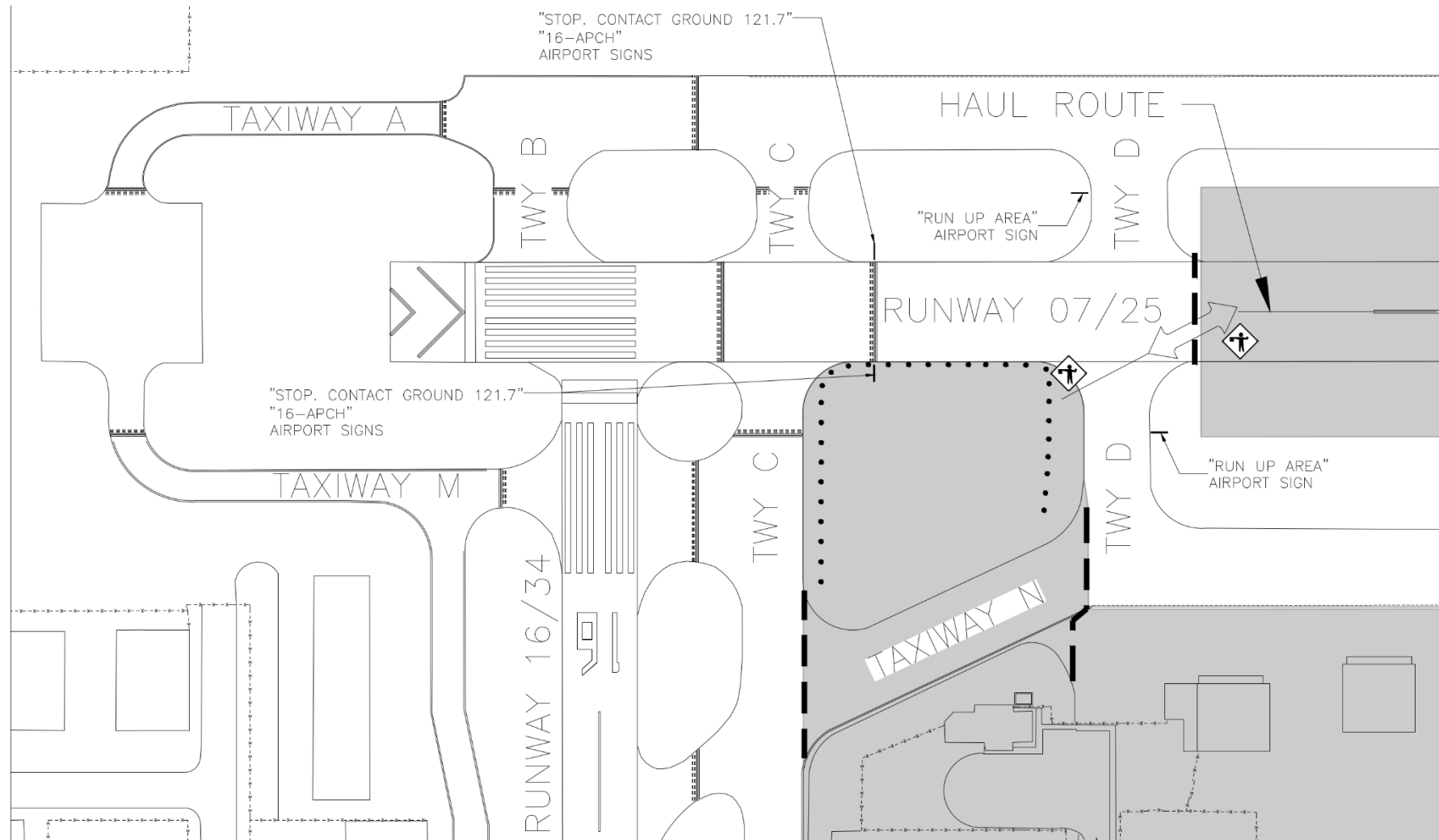


Air Traffic Procedures - General

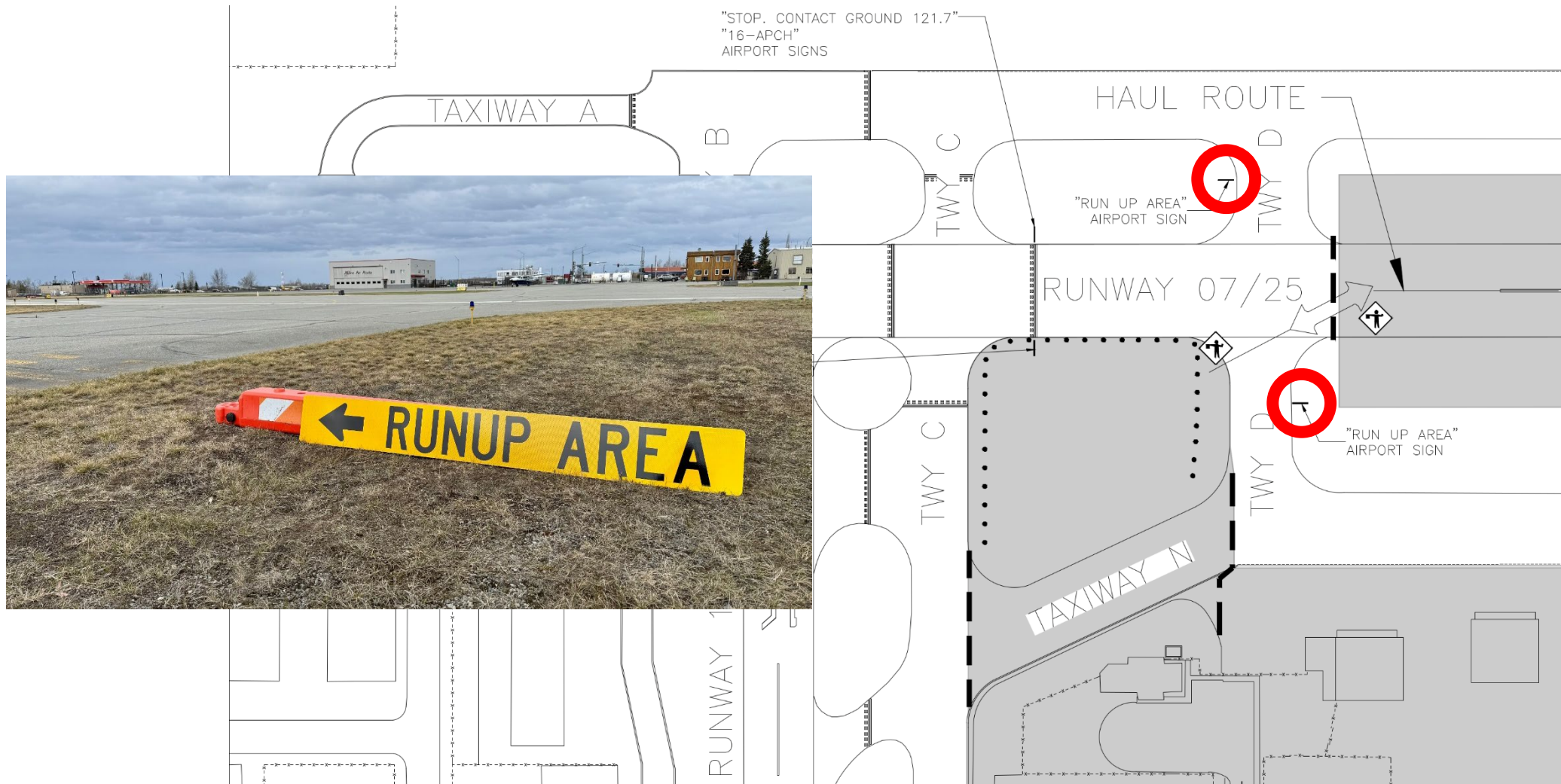
- **Runway 16 will be the primary/calm wind runway.**
- **Runway 23 in use for gravel arrivals.
Runway 5 or 23 may be used for departures.**
- **Due to congestion, expect limited availability of traffic pattern work.**



Phase 1A - detail



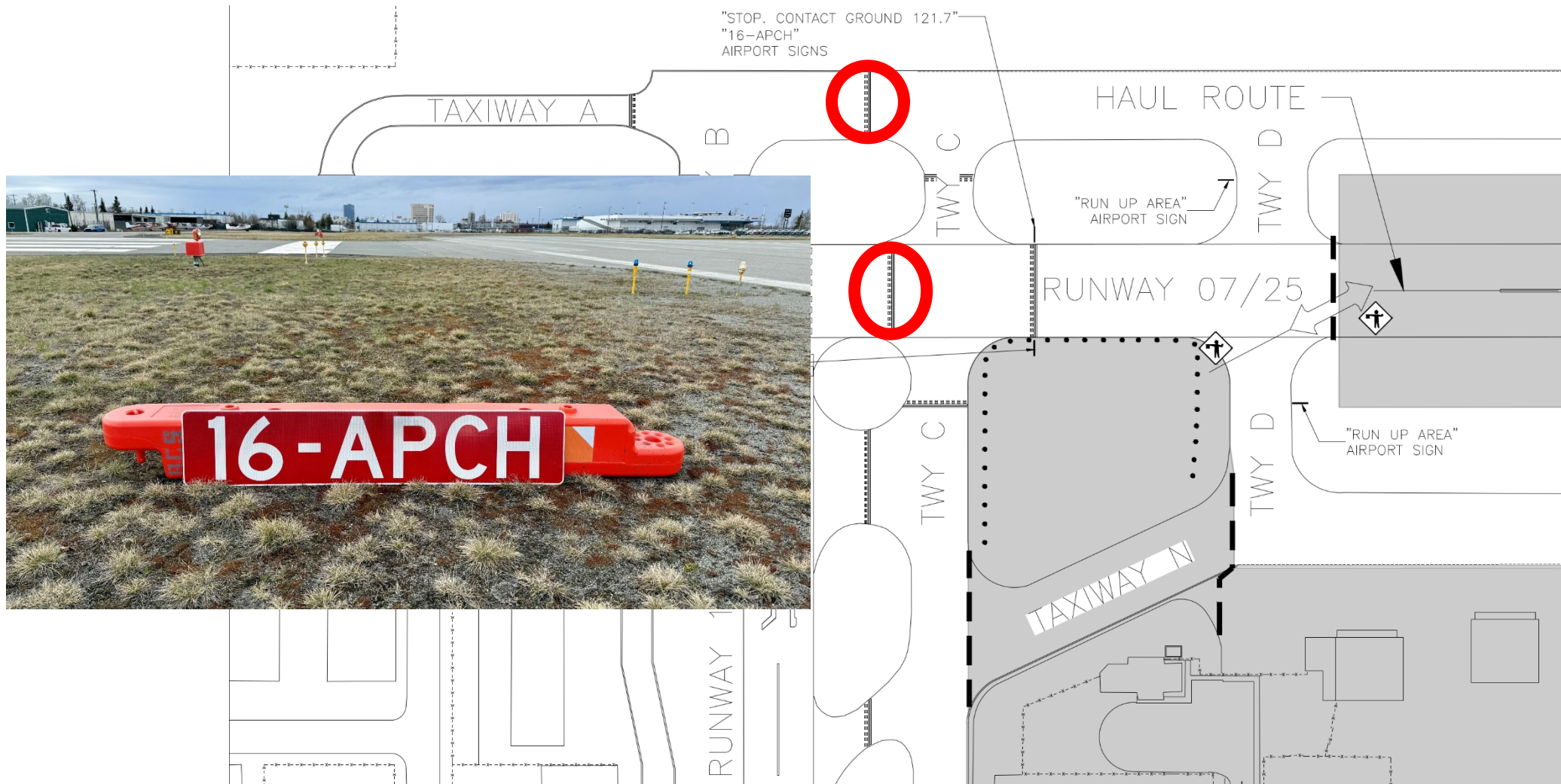
Phase 1A - detail



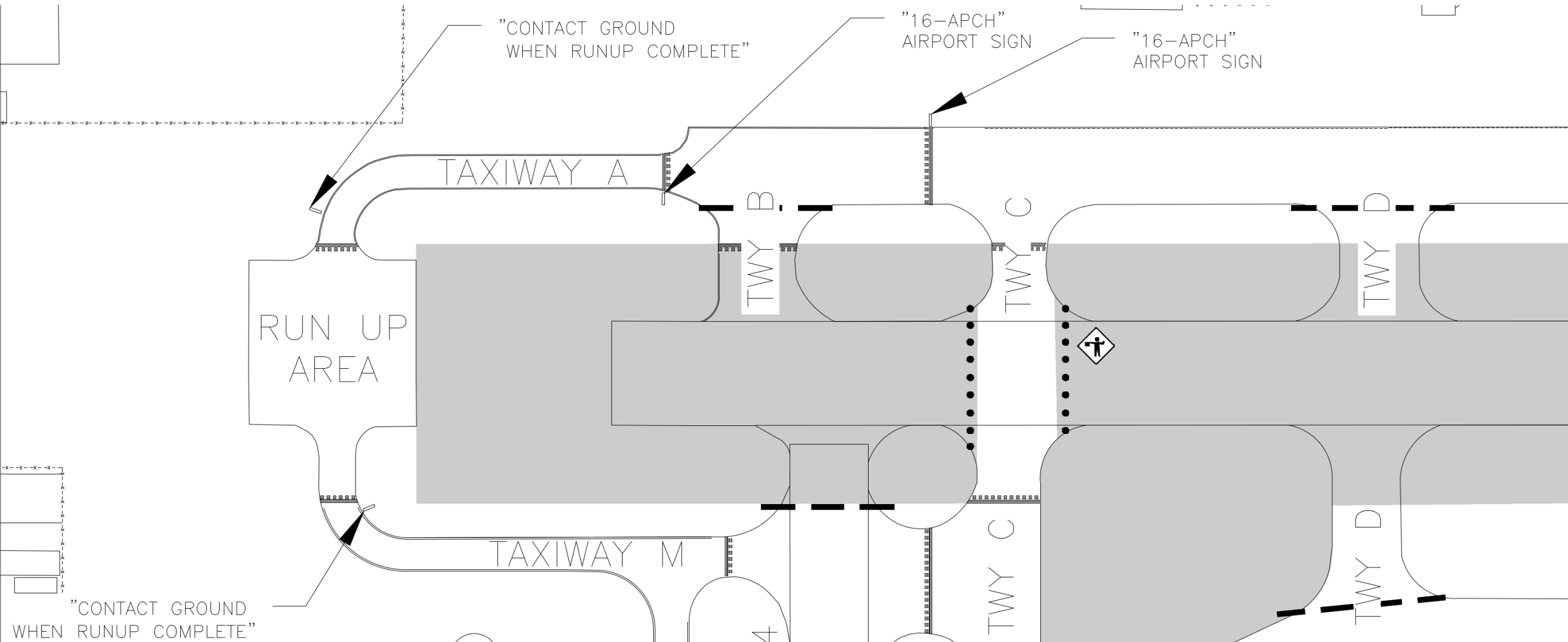
Phase 1A - detail



Phase 1A - detail



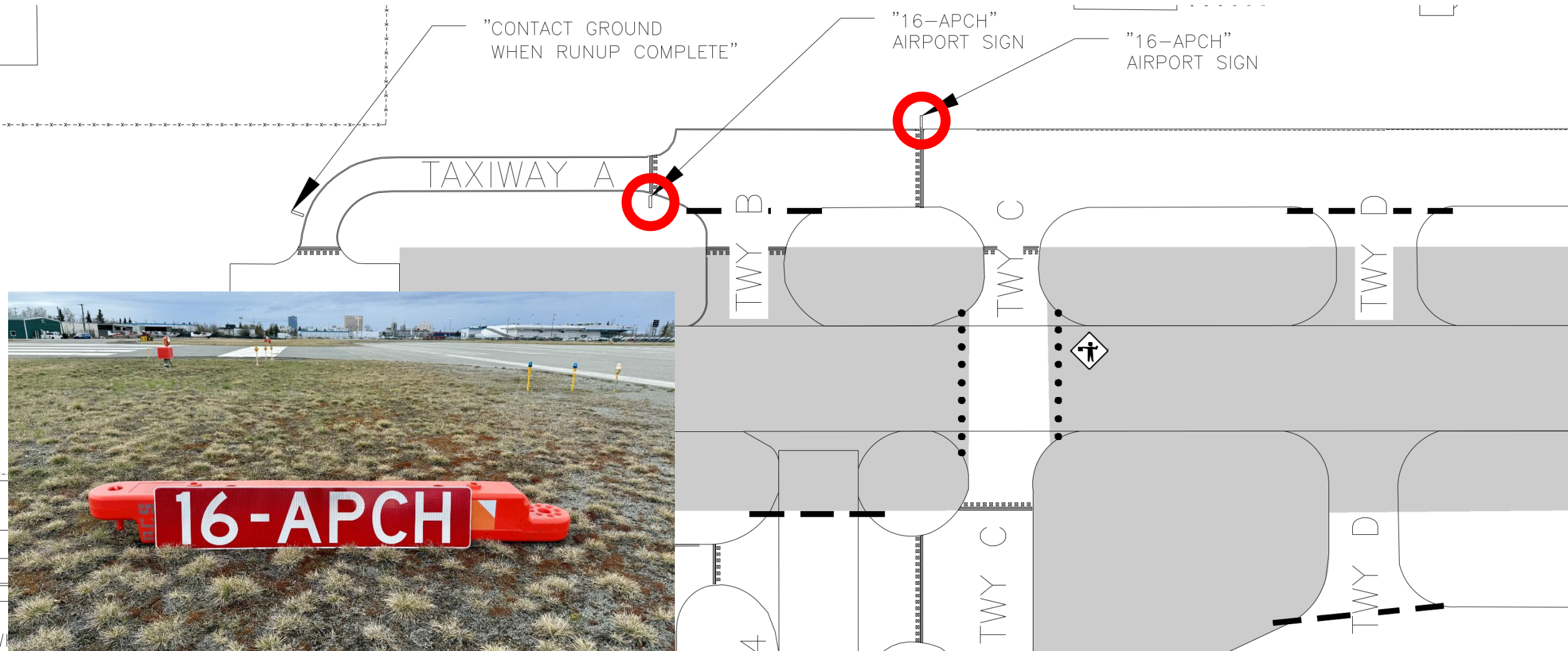
Phase 1B – detail – day



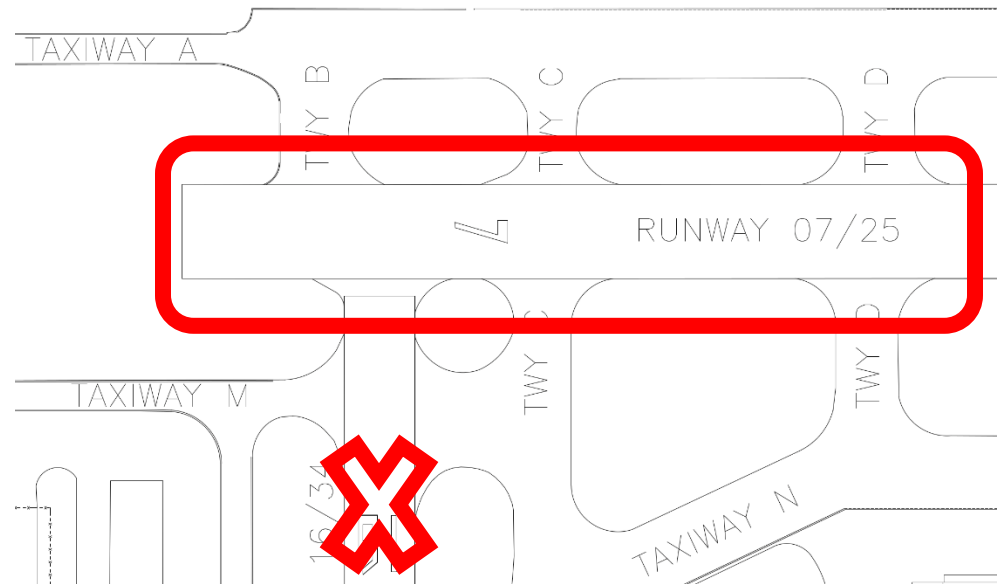
Phase 1B – detail – day



Phase 1B – detail – day



Phase 1B – detail - night



- **Runway 25 west of taxiway Delta**
- **Between 10pm and 7am, not to exceed 21 nights after 7/4. Runway 16 closed.**

Air Traffic Procedures – Ground

Departing

- **Check NOTAMs before every flight.**
- **Listen to the ATIS.**
- **When requesting taxi clearance, advise Ground Control if you will need a run-up or be ready up on reaching.**



Air Traffic Procedures - Ground

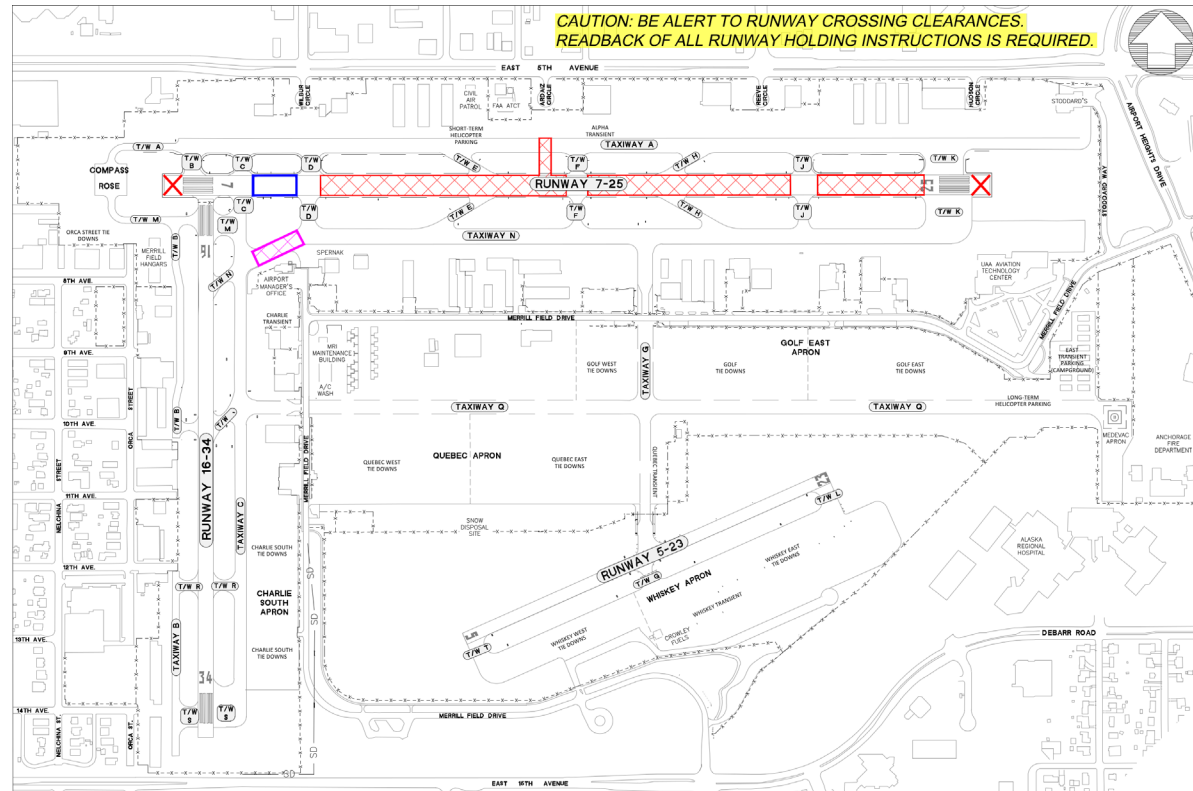
Departing




- **Listen carefully and write down taxi instructions – they will *probably* be non-standard.**
- **Have a copy of the runway construction airport diagram with you.**



Air Traffic Procedures - Ground

Runway Construction Diagram



-  Phase 1A ~ 6/9 - 8/8 Runway 25 East of Taxiway Delta CLOSED
-  Phase 1C ~ 7-Day CLOSURE Taxiway November between Charlie and Delta
-  Run Up Area



Air Traffic Procedures - Ground

Departing

- **North of runway 25, east of Foxtrot**
 - Ground will taxi via Alpha, through the crossing taxiway, November to run-up or departure area.
- **North of runway 25, west of Foxtrot**
 - Ground will taxi to run-up or departure area.
- **South of runway 25**
 - Ground will taxi to run-up or departure area.

Air Traffic Procedures - Air

Departing

IFR Departures

ODP is a textual procedure, found in the front of the Terminal Procedures Publication (white IFR approach book), currently page L3.

DEPARTURE PROCEDURE:

Rwy 16, climbing right turn to intercept the BGQ VORTAC
R-152 to BGQ VORTAC, thence...

Rwy 34, climbing left turn direct BGQ VORTAC, thence...



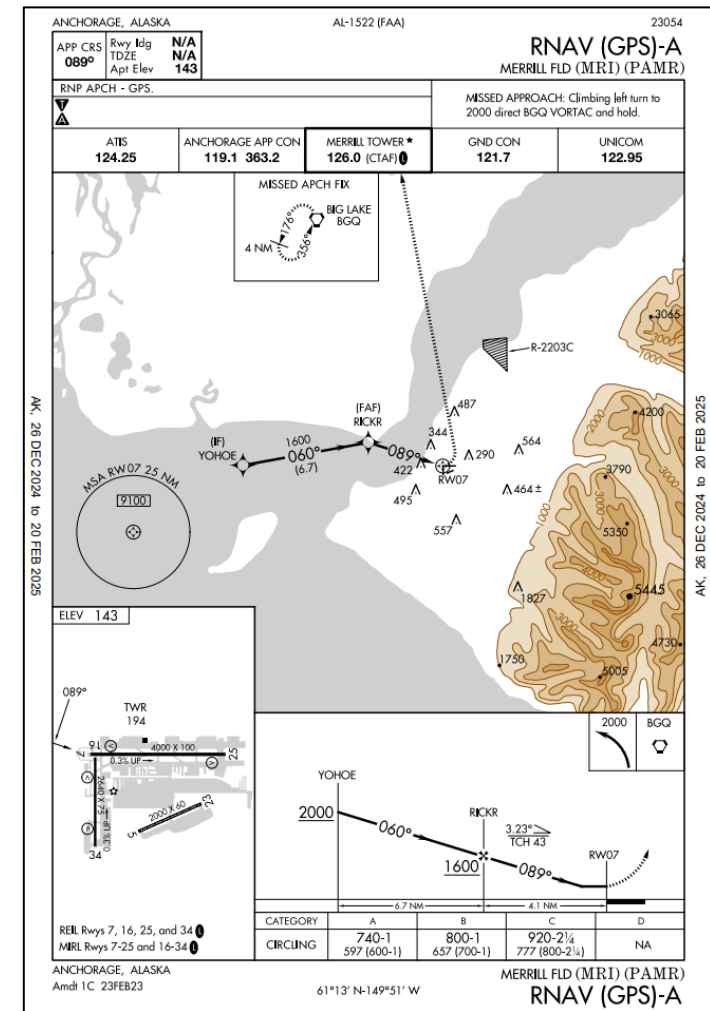
Air Traffic Procedures - Air

Arriving

IFR Approach

RNAV (GPS)-A

- Circle north for right base runway 16
- Circle south for left base runway 34

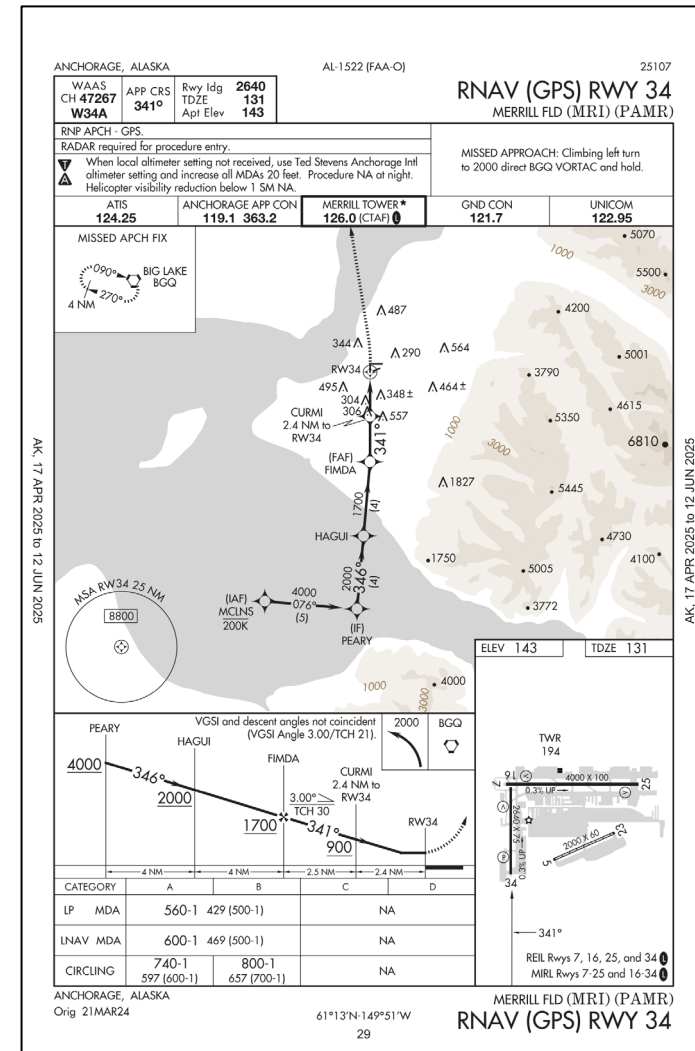


Air Traffic Procedures - Air

Arriving

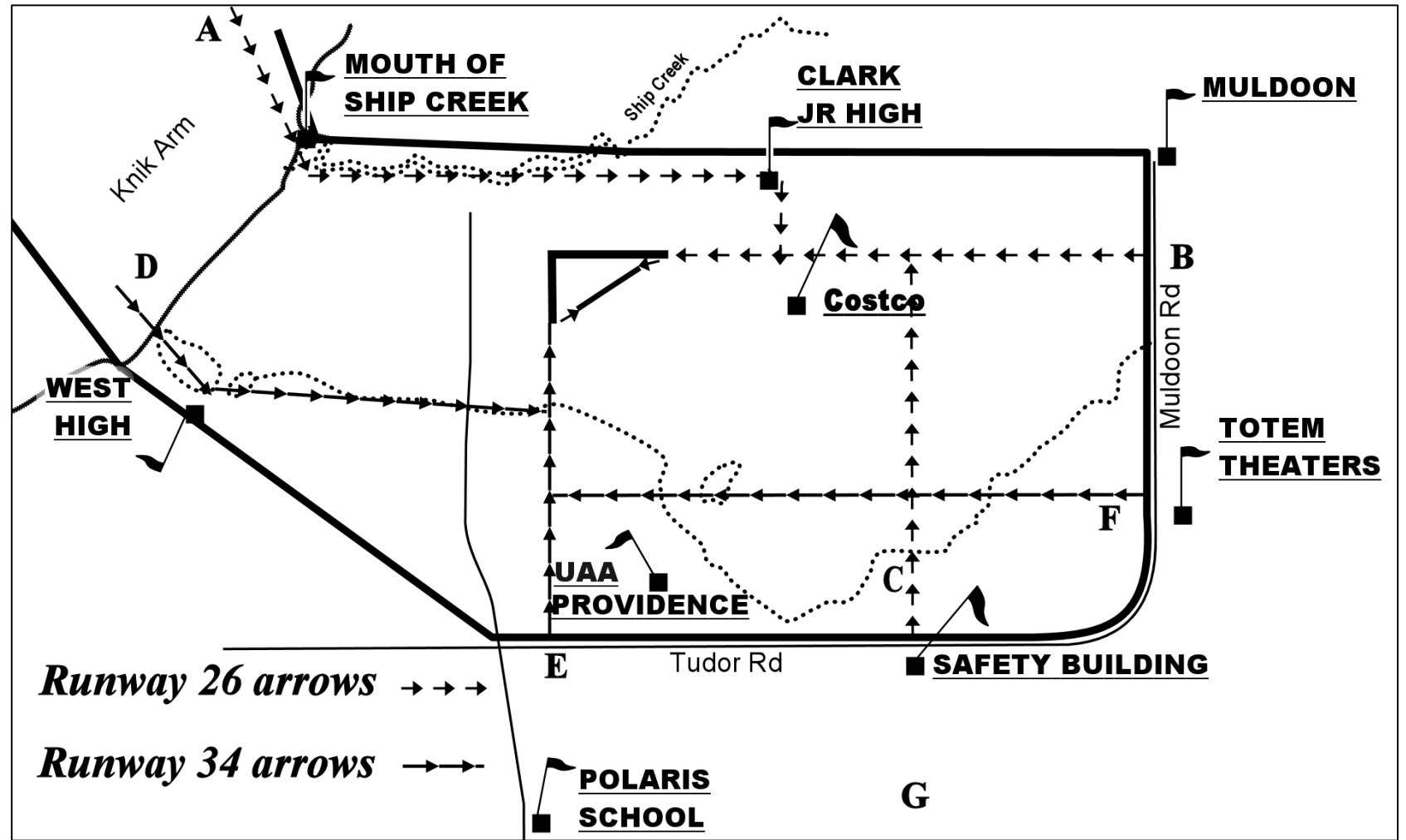
IFR Approach

RNAV (GPS) RWY 34



Air Traffic Procedures - Air

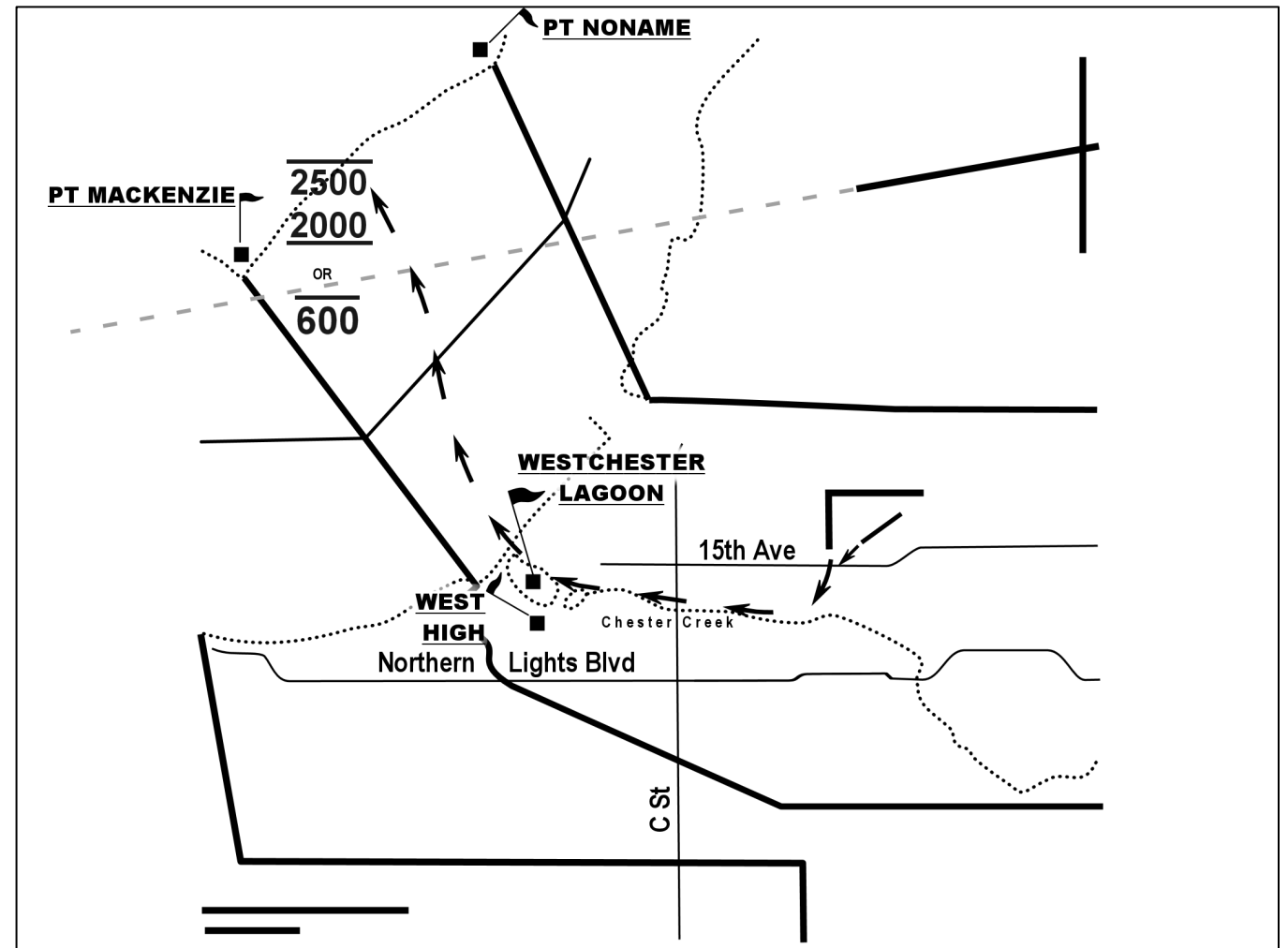
Pattern Entry
Runway 23/5
Runway 34



Air Traffic Procedures - Air

Chester Creek
Departure 16/23

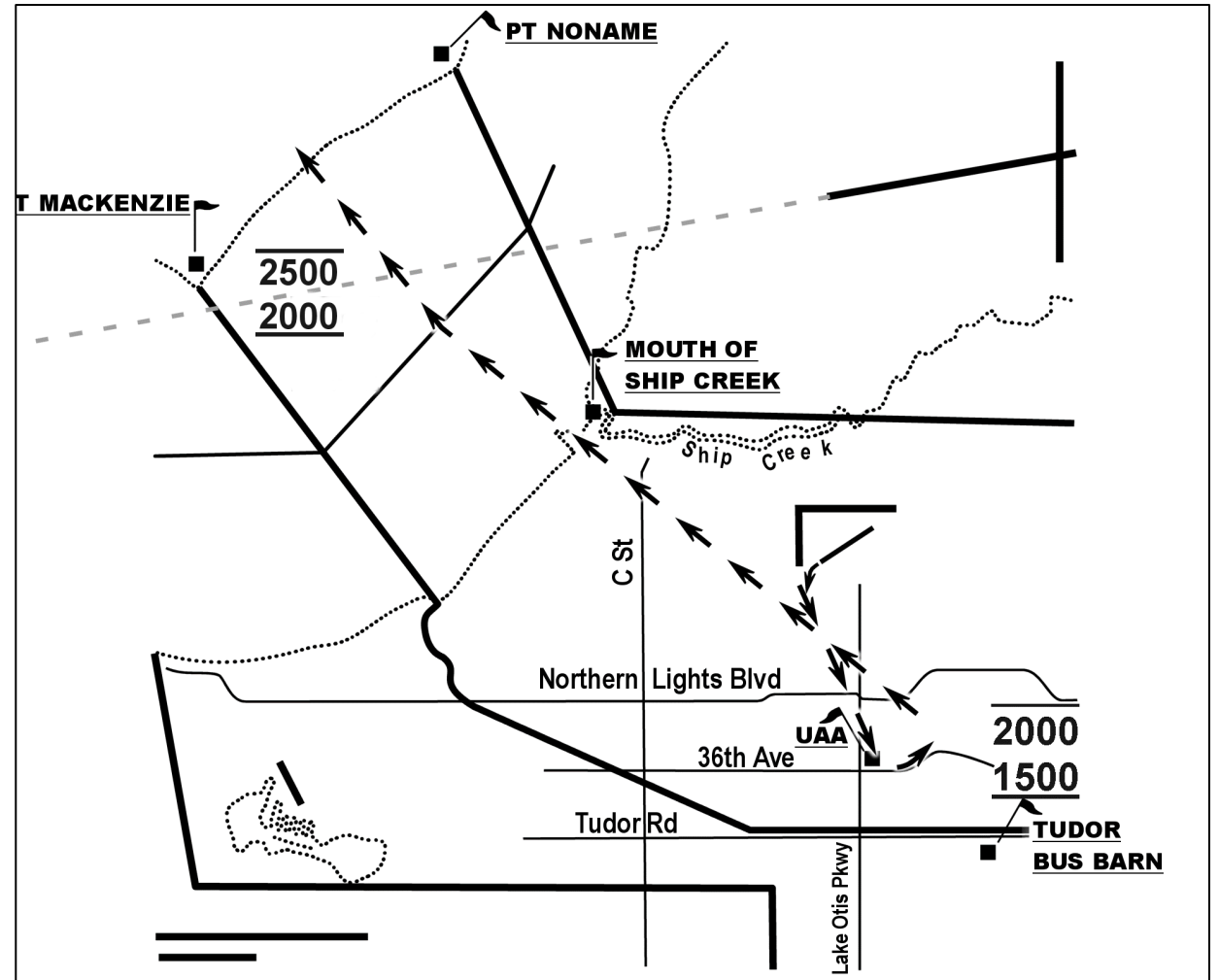
ADS-B Out
required at or
above 1400'.



Air Traffic Procedures - Air

City High
Departure 16/23

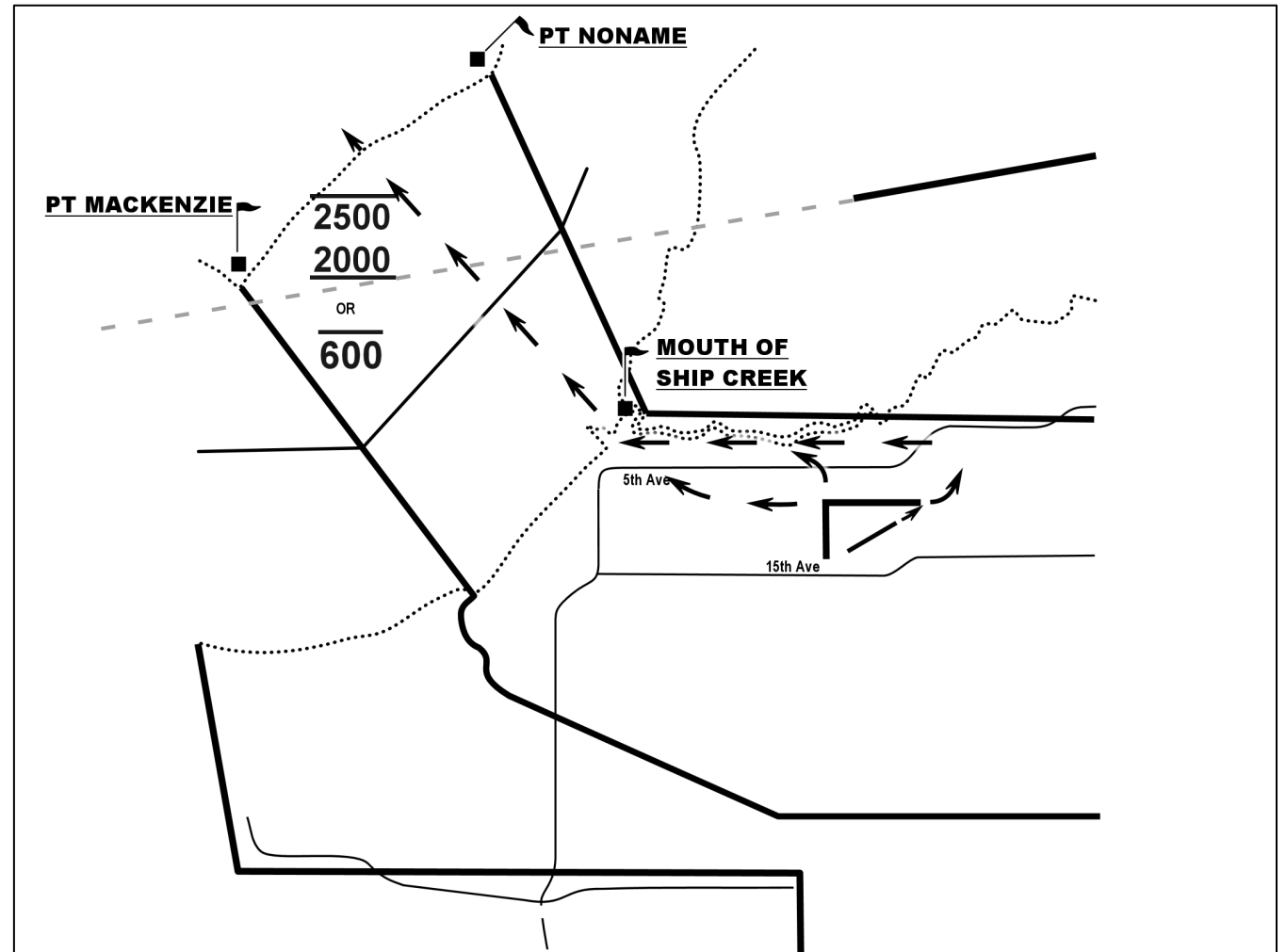
ADS-B Out
required.



Air Traffic Procedures - Air

Ship Creek
Departure 34

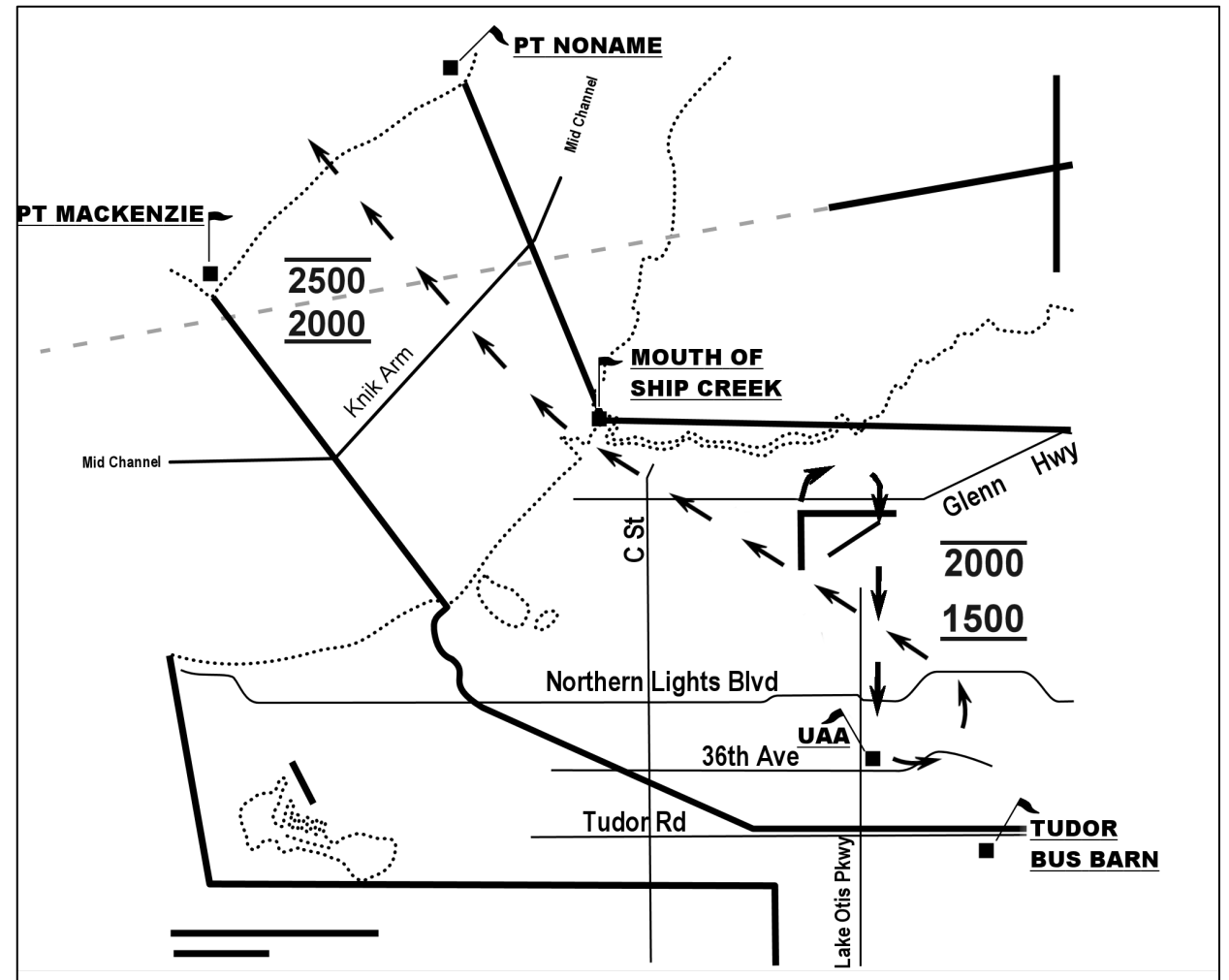
ADS-B Out
required at or
above 1400'.



Air Traffic Procedures - Air

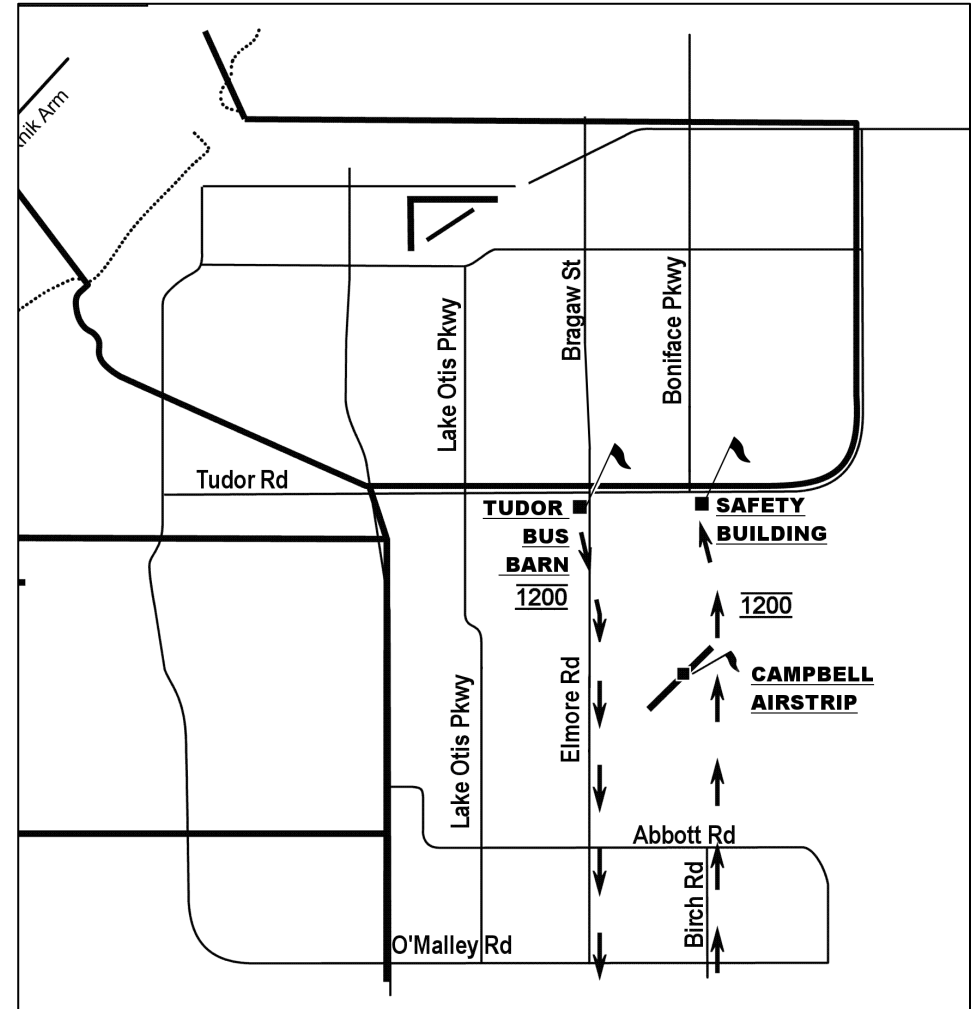
City High
Departure 34

ADS-B Out
required.

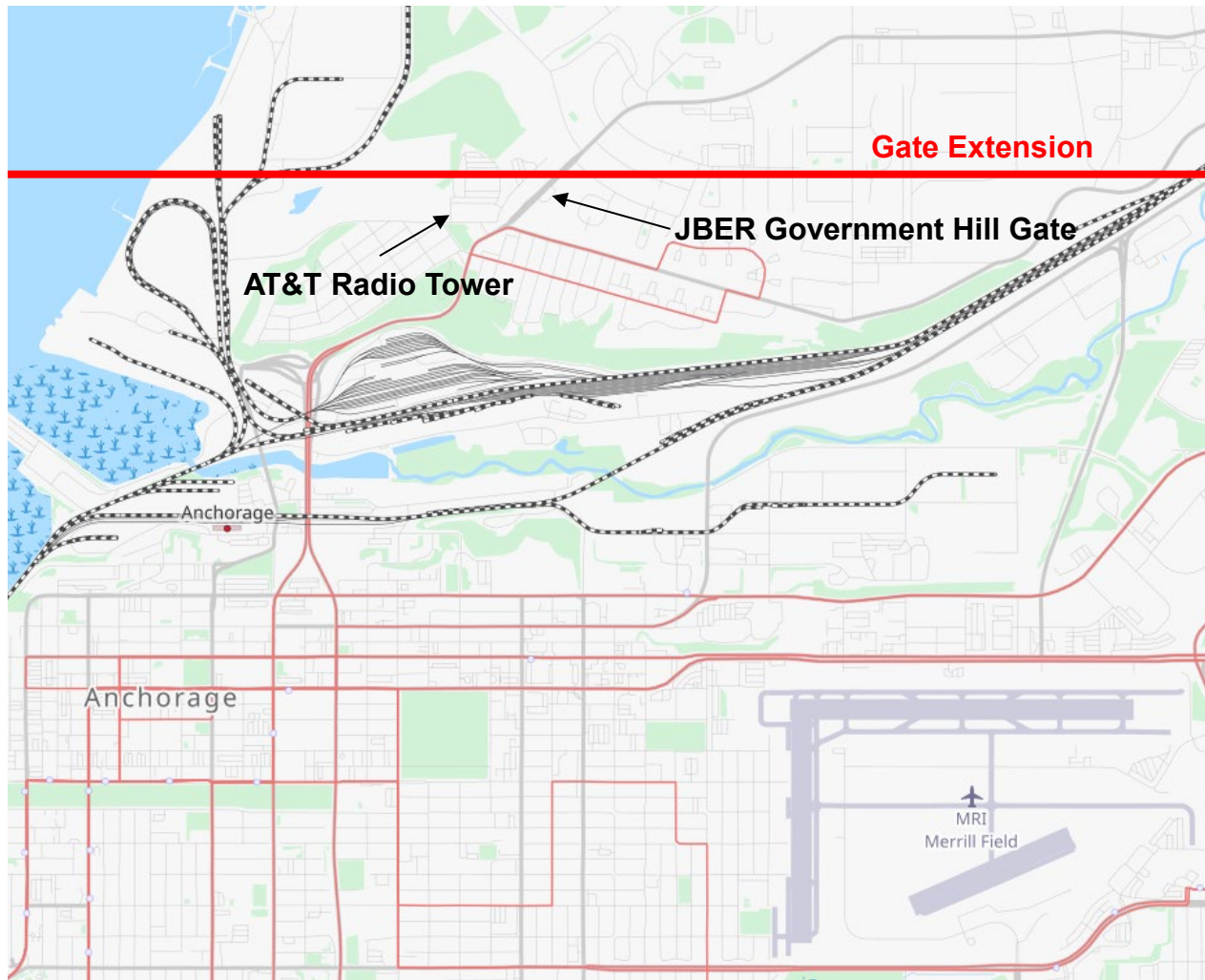


Air Traffic Procedures - Air

Campbell
Arrival/Departure



Air Traffic Procedures - Air



- **“Gate Extension” into EDF airspace, 1 mile final for runway 16**



Air Traffic Procedures - Air



Runway Exiting

- **Runway 25: 6 intersections**
- **Runway 16: 4 intersections (N is only 400')**



Runway Exiting

- **AIM 4-3-21 Exiting the Runway After Landing**

The following procedures must be followed after landing and reaching taxi speed.

1. Exit the runway without delay at the first available taxiway or on a taxiway as instructed by ATC. At airports with an operating control tower, pilots should not stop or reverse course on the runway without first obtaining ATC approval.
2. Taxi clear of the runway unless otherwise directed by ATC. An aircraft is considered clear of the runway when all parts of the aircraft are past the runway edge and there are no restrictions to its continued movement beyond the runway holding position markings. In the absence of ATC instructions, the pilot is expected to taxi clear of the landing runway by taxiing beyond the runway holding position markings associated with the landing runway, even if that requires the aircraft to protrude into or cross another taxiway or ramp area.
3. Immediately change to ground control frequency when advised by the tower and obtain a taxi clearance.



Air Traffic Procedures - Ground

Arriving

- **Listen carefully and write down taxi instructions – they will *probably* be non-standard.**
- **Have a copy of the runway construction airport diagram with you.**



Resources

- **Merrill Field web site**
<https://mri725rehab.com>
 - Pilot's Handbook
 - Taxiway diagram
 - This presentation

