



ENGSTROM ROAD TO TRUNK ROAD CORRIDOR: PROJECT HISTORY

2017: IDENTIFIED IN 2035 LRTP

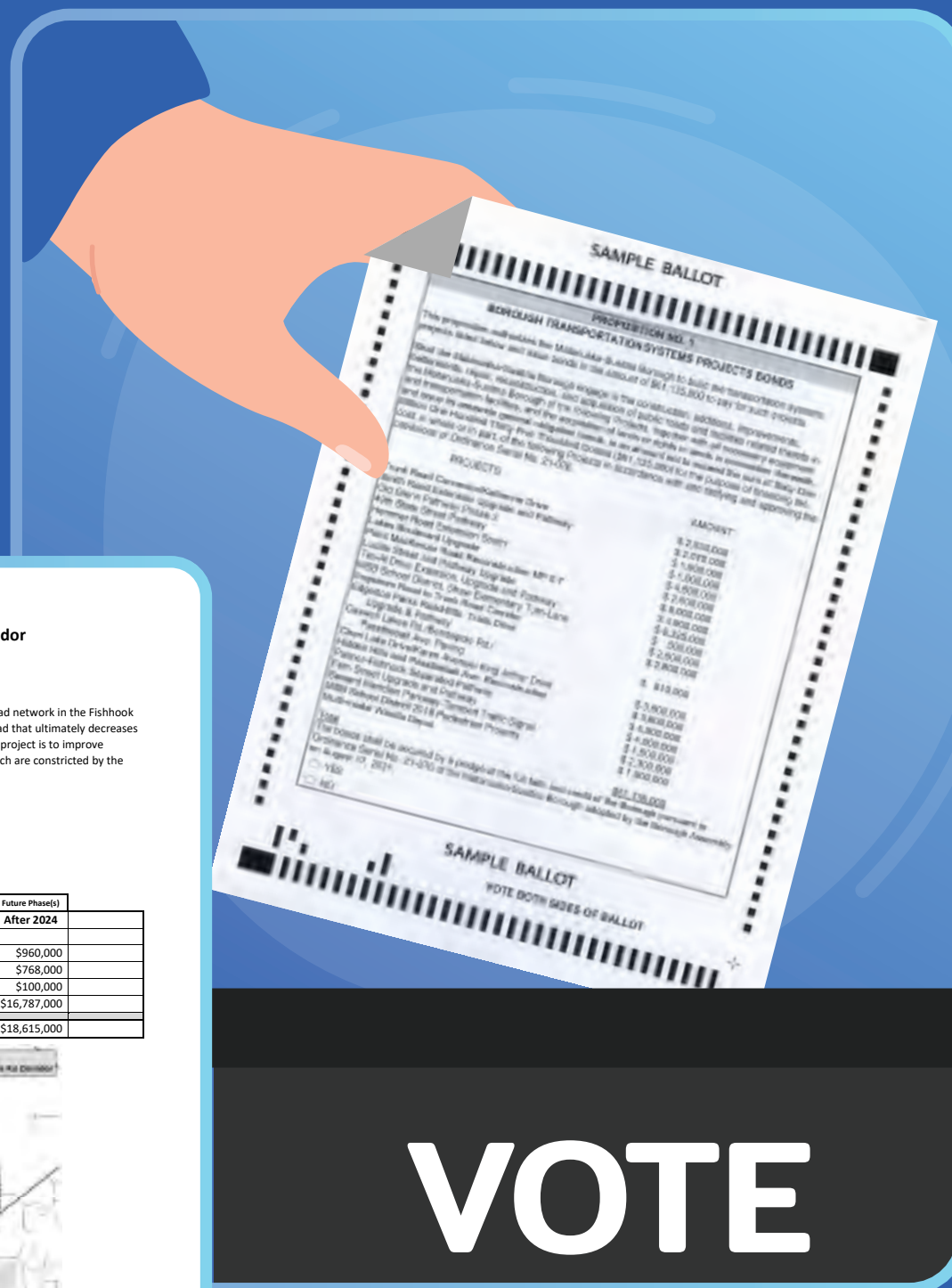


Item	Description	Project	Estimated Cost (\$)	Responsible Agency
21	State Highway 180 181 Rehabilitation	Asset Management	55.52	MSB
22	South Trunk Road Extension Phase 2: Parks Highway to Nelson Road	Construction	55.0	MSB, State, Legislative Court
23	Recreation Road Extension and Extension Parks Highway to Palmer Wasilla Highway	Construction	56.0	MSB, State, City of Wasilla, Palmer, State Legislative Court
24	Nelson Road Extension - Extended Nelson Road north to Service Road	Construction, Safety	53.0	MSB, State, Legislative Court
25	Engstrom Road Upgrade - Wasilla/Fishhook to Base Road	Capital Improvement	53.0	MSB, State, Legislative Court
26	Engstrom Road Construction - Access to Engstrom Road and proposed access to Trunk Road east of Nelson Road	Construction, Safety	52.5	MSB, State, Legislative Court
27	Engstrom North Extension to Trunk Road	Construction, Safety	52.5	MSB, State, Legislative Court
28	Trunk Road Upgrade and Extension	Construction, Safety	55.5	MSB, State, Legislative Court
Medium Term (2025-2035)				
29	Green Highway 180 181 Reconstruction - South of Green Highway to Palmer	Construction	52.0	MSB
30	Palmer Highway 180 181 to 182 - Palmer Road to Lake Road Reconstruction	Construction	55.5	MSB
31	Palmer Highway 180 181 to 182 - Palmer Road to Lake Road Reconstruction	Construction	55.5	MSB
32	Palmer Highway 180 181 to 182 - Palmer Road to Lake Road Reconstruction	Construction	55.5	MSB
33	Wasilla Road Improvements - Park Green Way Road to International Boulevard	Construction	56.5	MSB
34	Wasilla Highway 180 181 Reconstruction - Wasilla Highway to Trunk Road	Construction	57.5	MSB
35	180/181 MSB Intersection Improvement Project	Safety	55.0	MSB
36	Green Highway 180 181 Reconstruction - Palmer Road to Lake Road Reconstruction	Asset Management	58.0	MSB
37	Palmer Highway 180 181 to 182 - Palmer Road to Lake Road Reconstruction	Asset Management	55.0	MSB
38	Palmer Highway 180 181 to 182 - Palmer Road to Lake Road Reconstruction	Asset Management	55.0	MSB
39	Palmer Highway 180 181 to 182 - Palmer Road to Lake Road Reconstruction	Asset Management	55.0	MSB
40	Palmer Highway 180 181 to 182 - Palmer Road to Lake Road Reconstruction	Asset Management	55.0	MSB

This project was first identified in the 2035 Long-Range Transportation Plan (LRTP).

2021: VOTERS APPROVE TIP21 PROJECT

Voters approve the project as part of the Transportation Improvement Program (TIP21).



VOTE

Engstrom Road to Trunk Road Corridor

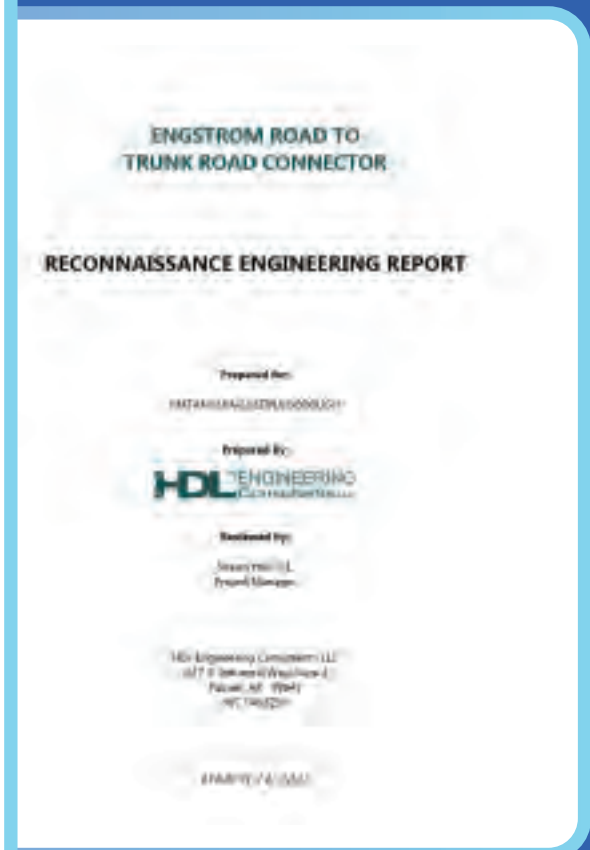
Project No. 19121-0011
 Assembly District 6
 Road Service Area: Region No. 25
 Description: The purpose of this project is to increase the capacity of the road network in the Fishhook area by providing an alternative route between Engstrom Road and Trunk Road that allows for more traffic on the Engstrom Road and beyond Road intersection. The goal of the project is to improve connectivity and congestion to meet current and future traffic volumes, which are constrained by the Fishhook area's limited collector level road network.
 Length: 2.7 miles
 Designer: HDL Engineering Consultants, LLC
 Construction: TBD
 TIP21 Estimate: \$568,000
 Future Phasing Estimate: \$18,815,000
 Estimated Total Cost: \$19,383,000

Phase	2021	2022	2023	2024	2025
Preparatory Engineering		\$68,000	\$500,000		
Design			\$160,000		
Right-of-Way			\$178,000		
Construction			\$152,000		
Year Totals		\$68,000	\$890,000		

Page 15 of 25

'21

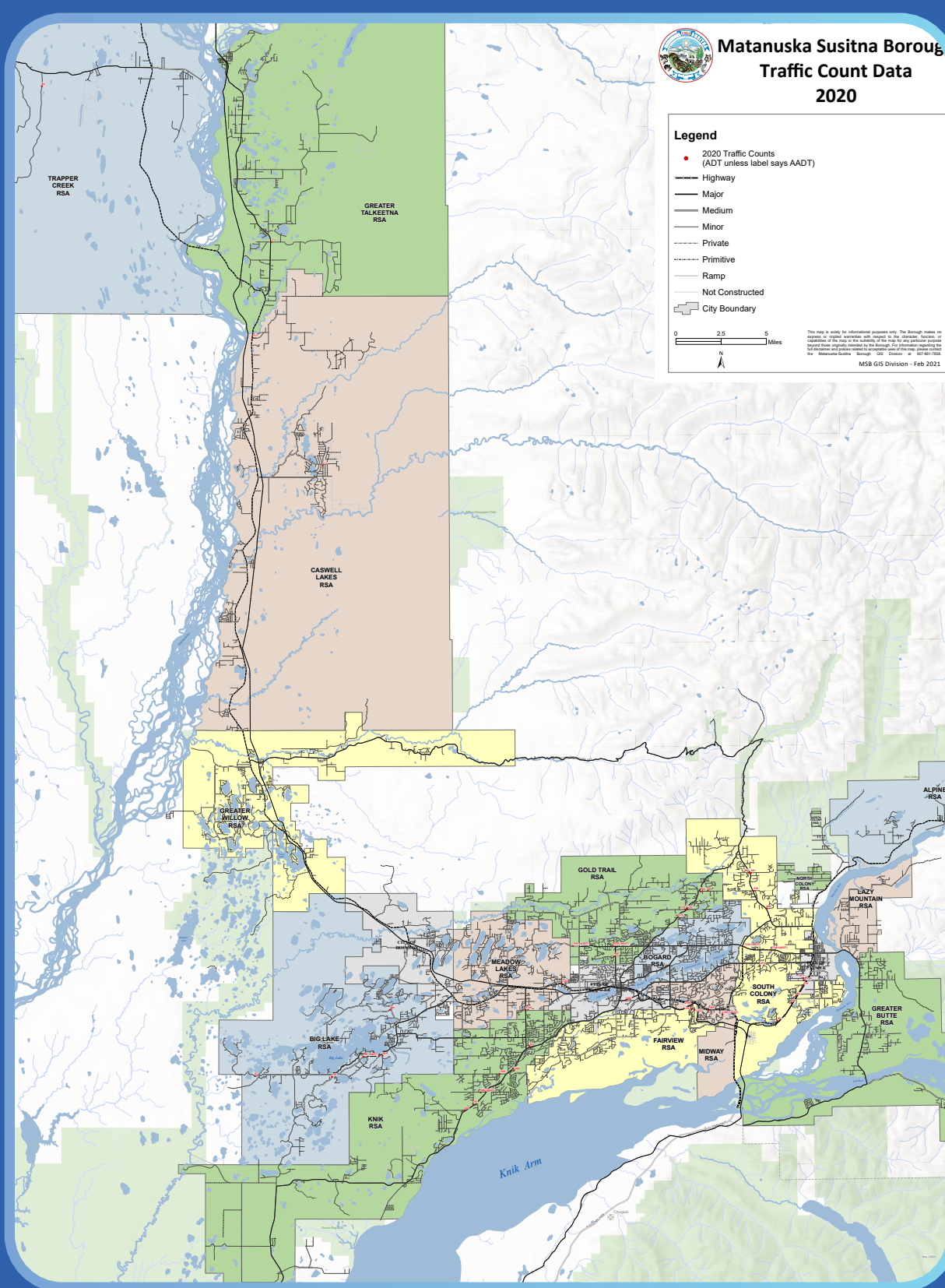
2022: RECONNAISSANCE STUDY BEGINS



The MSB initiates a study to investigate possible project routes.

'22

2024: TRAFFIC STUDY UNDERWAY



The MSB conducts a traffic study to analyze current patterns and assess the impact of planned projects on potential routes.

'24

2025: PROJECT PLANNING & DESIGN



The MSB engages the public to gather feedback on the route selection process.

'25

WHAT'S NEXT?

- Complete a Traffic and Safety Analysis
- Conduct field investigations
- Share what we learn through additional stakeholder coordination & public open houses
- Complete an environmental impact evaluation
- Develop a Route Selection Report based on stakeholder & public feedback