

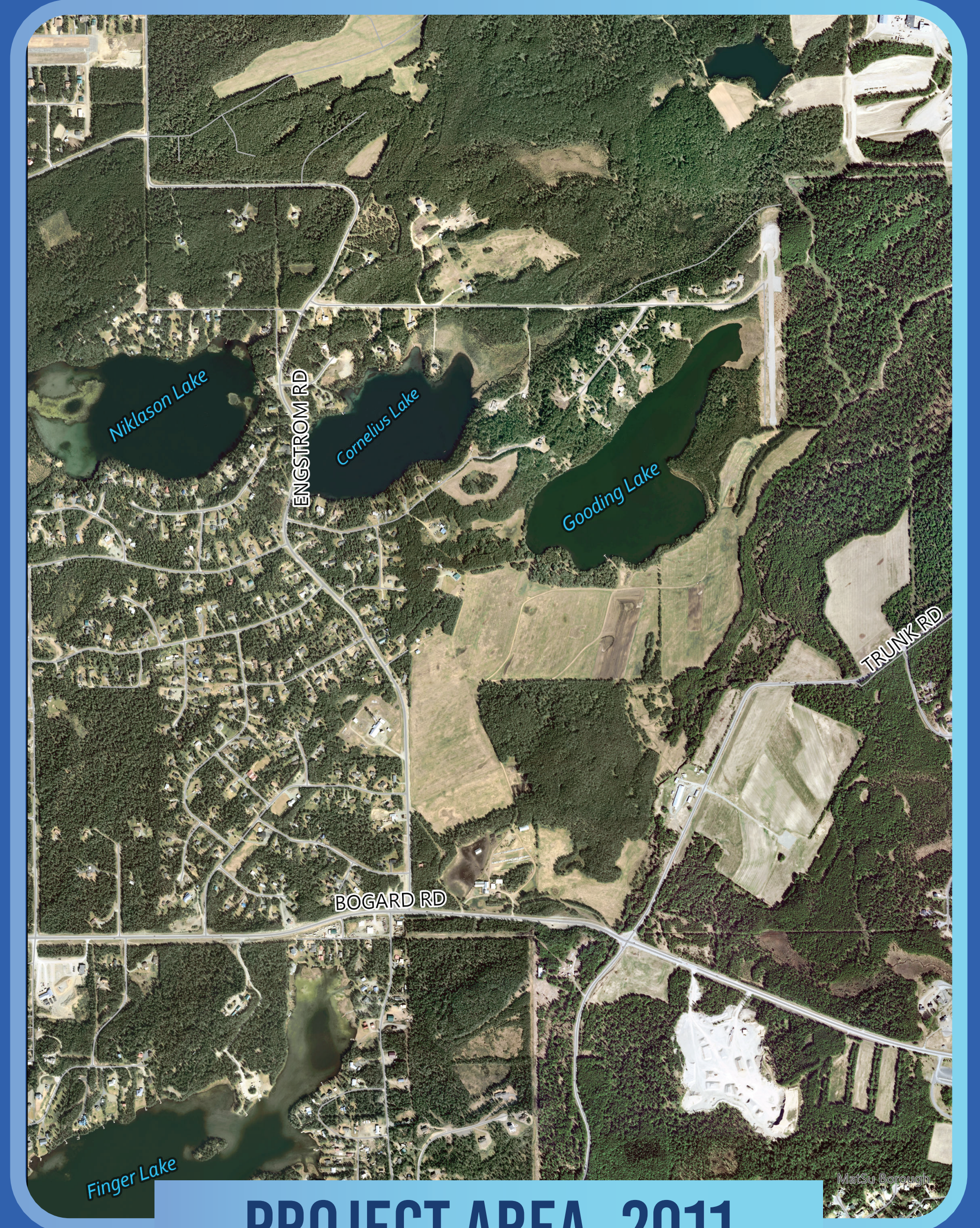


ENGSTROM ROAD TO TRUNK ROAD CORRIDOR: GROWTH HISTORY

The Matanuska-Susitna Borough (MSB) has grown steadily over the years, leading to:

- **1** More traffic on the roads
- **2** Increased congestion
- **3** Safety concerns

Rapid development in the Core Area, especially along Engstrom Road, has made these challenges even more noticeable. To help ease congestion and improve travel, this project aims to create a better connection and provide an alternative route between Engstrom Road and Trunk Road.



PROJECT AREA, 2011



PROJECT AREA, 2024

